



URBAN TREES ALONG THE EMBARCADERO



KONONDS BY KENNETH CAPPS



CANCER SURVIVORS PARK DONATED BY RICHARD & ANNETTE BLOCH FOUNDATION



SHELTERING WINGS BY CHRISTOPHER SLATOFF

PORT OF SAN DIEGO PUBLIC ART

*The Port of San Diego is dedicated
to protecting San Diego Bay
and Port Tidelands*

*The Tidelands Collection
has come to reflect
and define the region's
character and identity*

You might think that San Diego Bay's natural beauty would be more than enough to satisfy the eye and engage the soul. But, the Port of San Diego believes that integrating public art with nature in the Bay's public spaces takes the experience of the environment to a whole new level. That's why we have the Tidelands Collection of public art which we invite you to enjoy.



Unified Port
of San Diego

portofsandiego.org



© 2009 Port of San Diego

COVER STAMP ART: THE FISHERMAN BY STEVEN FAIRFIELD

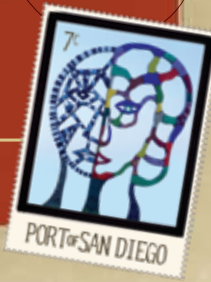


Unified Port
of San Diego

PUBLIC ART

public art

COMING TOGETHER, © 2001, NIKI DE SAINT PHALLE



A thoughtful, collaborative selection process

At its best, public art — including the Port of San Diego's Tidelands Collection — does more than passively reflect the world surrounding it. It engages the public. It celebrates cultural heritage. It provides a community identity. It reveals our concerns. It can be playful or poignant or even provocative. It helps us interpret our world.

Because response to art is so highly personal, it is worth sharing how the Port Public Art Program selects pieces for display. It is a thoughtful, collaborative process that starts with the Public Art Committee.

The Committee recommends artwork to the Board of the Port Commissioners according to the artwork's artistic merit, project or site appropriateness, durability, community support, installation and maintenance budget and, of course, its relation to other works in the collection.

The artwork can be a painting, mural or fresco; a sculpture or monument; photography; crafts; media and electronic arts; textiles; mosaics; or functional elements of landscaping like benches, lighting or gates — basically, a wide range of artistic expression created by professional artists. But, it must be designed or intended for a specific publicly accessible location, whether the installation is temporary or permanent.

This selection process has resulted in a collection that includes:

- **THE ICONIC NIKI DE SAINT PHALLE'S "COMING TOGETHER,"** a monumental mosaic sculpture on the grounds of the San Diego Convention Center,
- **"TAILS OF THE BIG BAY"** at Tidelands Park in Coronado, Annika Nelson's visual story of the Bay's tidelands and wildlife,
- **THE WHIMSICAL "SEASIDE SEATING"** at Pepper Park in National City by ceramic sculptor Doug Snider where you sit down on art itself when you sit on one of his benches,
- **JAMES HUBBELL'S "PACIFIC PORTAL"** at Shoreline Park East on Shelter Island — a sailor's dream, evocative of drifting clouds, cresting waves and billowing spinnakers,
- **THE "WIND OARS" KINETIC ARTWORK** at Chula Vista Bayside Park, a wind-activated sculpture by George Peters and Melanie Walker featuring moving light-reflective vanes that emulate a flock of birds in flight,
- **URBAN TREES** on the North Embarcadero, the wildly original temporary installation of arboreal creations of several dozen highly esteemed artists,
- **THE CANNERY WORKERS TRIBUTE** at César E. Chávez Parkway and Crosby Road, honoring the men and women who helped feed the nation and the world, and
- **IMPERIAL BEACH'S SCULPTURE WALK,** which is dotted with permanent and temporary works of art recalling the sunny times of the past. Make sure to check out Malcolm Jones' "Surfhenge" and Wyland's "Ocean Riders."



U.S.S. SAN DIEGO (CL-53) MEMORIAL BY EUGENE DAUB & LOUIS QUAINANCE
PHOTO BY BOB GARDNER



SURFHENGE BY MALCOLM JONES



BOB HOPE TRIBUTE
BY EUGENE DAUB & STEVEN WHYTE